



*Swinton Park*

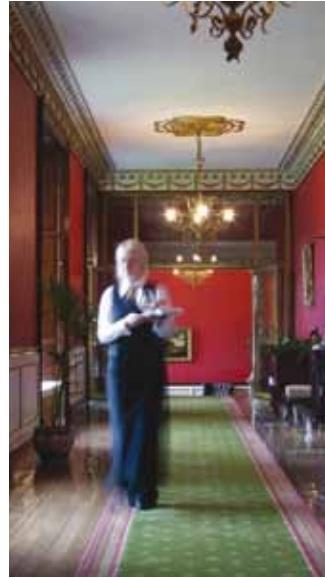


# Swinton Park

---

A luxury castle hotel set in 200 acres of landscaped parkland in the Yorkshire Dales. The ancestral seat of the Earl of Swinton, and a stately home that has played host to country house parties of legendary style and grandeur.





## *Welcome to Swinton Park*

The castle dates from the late 1600's, with subsequent alterations by the Danby and Cunliffe-Lister families, combining both Regency and Victorian Gothic style and architecture.

Samuel Cunliffe-Lister bought Swinton Park in 1880, having amassed a fortune in the woollen mills in Bradford. His great-great-great grandson, Mark (the current Baron of Masham), now owns the hotel and surrounding 20,000 acre estate with his wife Felicity.

Lavishly furnished with family portraits and antiques, the hotel combines all the traditional warmth and hospitality of a stately home with every creature comfort that a contemporary hotel could provide.

Relax and absorb the timeless elegance of a quintessentially English country house.

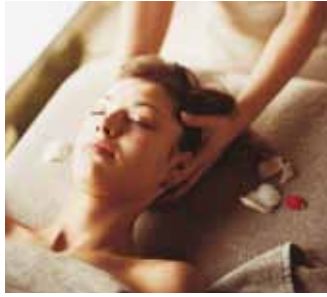
## *The Bedrooms*

Each of the thirty bedrooms is individually designed, drawing inspiration from the nearby dales, castles, abbeys and towns.

Sweeping views over the surrounding gardens, parkland and gatehouse are in abundance.

Soak up the peace and tranquillity, and indulge in the privacy and comfort of your own room.





## *The Spa*

The exclusive use spa is an oasis of calm: a peaceful conservatory bathed in warm natural light with lush tropical vegetation. The Jacuzzi pool is set in its own deck, with relaxation zone and sauna at ground level.

Our five treatment rooms offer face, body, beauty and complementary therapy treatments, with a post-treatment relaxation room.

Individual treatments, day spa and spa accommodation packages are available throughout the year.



## *The Restaurant*

Built by Samuel Cunliffe-Lister in 1890, the dining room boasts a superb gold leaf ceiling and sumptuous décor. This is matched by our exquisite and award winning cuisine.

We take pride in our fresh seasonal produce and commitment to low food miles. Most of our ingredients are sourced from the hotel's walled garden and surrounding 20,000 acre estate, including venison, game, lamb and beef, and wild foods such as elderflower, wild garlic and woodland mushrooms.

For a sense of occasion why not try afternoon tea on the terrace, or a picnic in our moorland Bothy hut. For a dining experience with a difference, go alfresco at the Deerhouse in the Parkland, or join the Chef's Table in the Cookery School.

## *The Walled Garden*

The four acre walled garden has been lovingly restored in recent years by Mark's mother, Susan Cunliffe-Lister. Susan is a highly regarded garden designer (*Country Life* Gardener of the Year 2001), and the garden is now in full production with over 60 varieties of seasonal fruit, vegetables and herbs, along with an extensive flower cutting garden.

Our chefs work closely with Susan, selecting the varieties of crops grown and ensuring that the menus incorporate the freshly picked produce on a daily basis.





## *The Cookery School*

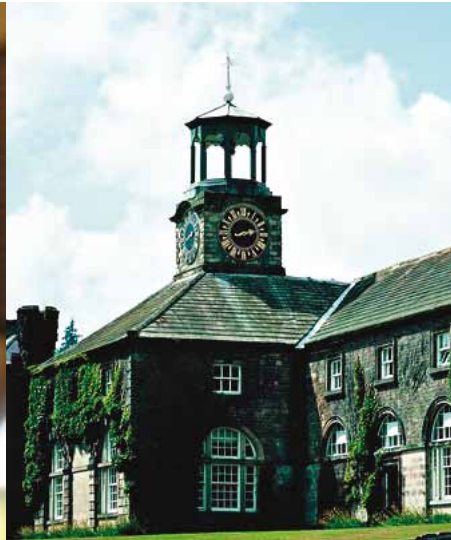
The converted Georgian stables are home to our acclaimed cookery school, where we run residential, day, evening and demonstration courses throughout the year.

Light and airy throughout, the demonstration kitchen has been designed to the highest specification, whilst maintaining a relaxed environment, well disposed to the appreciation of good food and fine wine!

Master essential skills such as breadmaking and patisserie, filleting and butchery, and stocks and sauces. The freshest seasonal ingredients are sourced from the walled garden and surrounding countryside, creating mouthwatering dishes to savour.



The courses cater for guests of all ages and abilities, with "hands on" or demonstration courses to choose from. Please see our Calendar of Events for further details about the cookery school chefs (including celebrity chef Rosemary Shrager) and the course programme and rates.





## *Activities*

As a country estate, the surrounding parkland, countryside and dales offer an unparalleled choice of activities.

This is the great outdoors to explore at your leisure and guests have exclusive use of the 200 acres of 18th century landscaped parkland that surrounds the hotel, with woodland, five lakes and gardens.

For those wanting to wander further afield, our Luxury Walking Breaks are available with baggage delivery, maps and guides.

Activities available include:

- Bird of Prey Centre offering falconry displays and flying experiences,
- Mountain biking on the country lanes or on our woodland tracks
- Cricket pitch with resident team
- Croquet and boules pitch
- Off-Road Driving Course
- 9 hole Golf course with tuition available from our PGA Professional
- Pony trekking and 40 jump UK Chaser Course
- Fly fishing for salmon, trout or grayling on the River Ure, or Rainbow Trout on Leighton Reservoir
- Clay Pigeon Shooting





## *Activities for Families with Children*

Families and children are particularly welcome at Swinton Park. Reunions, anniversaries and birthday parties are all well catered for, allowing everyone quality time to relax and enjoy each other's company. Entertainment for children includes indoor and outdoor play areas, children's cookery courses, a Bird of Prey Centre, picnics, pony trekking, kite flying and model boating on the lake. We also have baby massage, a children's menu, cots and z beds, baby listening and goody bags in bedrooms. Local attractions include the fantasy garden at The Forbidden Corner, theme park at Lightwater Valley and the National Railway Museum at York.



## *Local Attractions*

There are a wealth of local attractions to choose from in the nearby area. Yorkshire boasts some of the most spectacular castles and abbeys in the UK, including Fountains Abbey (a world heritage site), Jervaulx Abbey and Bolton Castle, as well as stately homes including Newby Hall, Castle Howard and Harewood House.

The RHS Gardens at Harlow Carr are just outside the spa town of Harrogate, with Ripon Cathedral and the walled city of York nearby.

For those who enjoy a flutter on the horses, there is an excellent choice of race courses at York, Ripon and Thirsk, and our Racing Break packages include a trip to the nearby stables and gallops at Middleham.

The nearby market town of Masham is home to the annual Sheep Fair and two renowned family run breweries – Black Sheep and Theakstons.





## *Events*

Learn something new or indulge in a passion – our themed events allow guests the opportunity to share our appreciation of our countryside and gardens, food and wine, and country pursuits. Our Calendar of Events lists all the details of our food festivals, themed lunches, activity days and family events and more.



## *The Environment*

The fragile nature of the landscape surrounding us is something we are all very aware of. Swinton Park enjoys a wonderful setting, and it is our aim to operate the hotel in the most environmentally responsible manner possible.

In 2006, the hotel installed a carbon neutral wood-chip boiler, which is used to provide all our heating and hot water requirements. We have also installed our own laundry, using the latest O-Zone technology reducing our consumption of chemicals, water and energy by 30%.

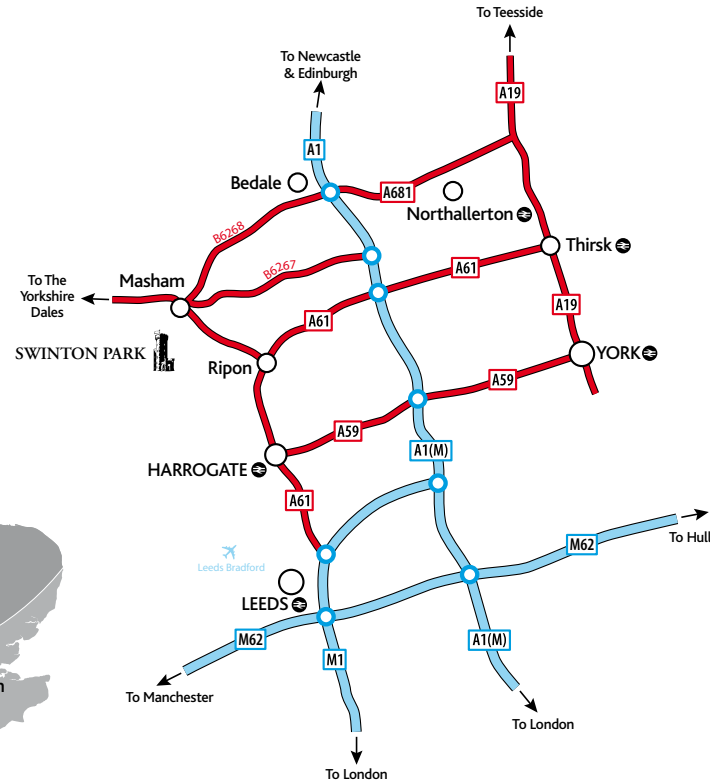
Food miles are also kept to a minimum with the majority of our ingredients for the hotel and cookery school sourced from the walled garden and surrounding countryside. Other measures include recycling all glass and cardboard, an in-house table water system, recycled pencils and energy efficient bulbs.



## *Our Recent Awards & Accolades*

- Hotel of the Year 2009, White Rose Awards
- Sustainable Tourism Award 2009 (Highly Commended), White Rose Awards
- Green Business Award 2009, Yorkshire Rural Awards
- Tea Guild Award of Excellence 2009
- Green Tourism Business Scheme 2008
- Top Ten Cookery Schools 2008, Sunday Times
- Taste of Yorkshire 2007, White Rose Awards
- Top Ten European Castle Hotel 2007, Trip Advisor
- Outstanding Customer Service Award 2006, White Rose Awards
- 50 Most Romantic Hotels 2006, The Independent
- Hotel of the Year 2004, Excellence in England Awards

# How to find us



Outer Cover printed on 300gsm ON Offset – Manufactured using environmentally friendly techniques and follows strict European environmental legislation. All ON products are made from Elemental Chlorine Free (ECF) pulp sourced from sustainable managed forests. Text printed on 130gsm Regency Satin – Contains material sourced from responsibly managed and sustainable forests, is made from 10% recycled pre-consumer waste, and is manufactured under strict environmental management systems, the International ISO 14001 standard, EMAS and the IPPC regulation. Printed using environmentally friendly vegetable based inks.



Swinton Park, Masham, Ripon, North Yorkshire HG4 4JH  
01765 680900 ■ [www.swintonpark.com](http://www.swintonpark.com) ■ [reservations@swintonpark.com](mailto:reservations@swintonpark.com)